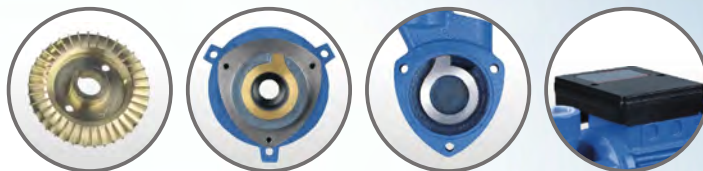


## IDB 清水泵 CLEAN WATER PUMP



### CONSTRUCTION

#### PUMP: Peripheral

Pump Body: Cast Iron / Cast Iron With Brass Insert  
/ Cast Iron With Stainless Steel Insert

Impeller: Brass

Mechanical Seal: Carbon + Ceramic + Stainless Steel + Rubber

Front Cover: Cast Iron / Cast Iron With Brass Insert

#### MOTOR: Single Phase Heavy Duty Continuous Work

Motor Housing: Aluminium

Shaft: Carbon Steel / 304 Stainless Steel Welded  
/ 420 Stainless Steel

Insulation: Class B / Class F

Protection: IP44 / IP54

Cooling: External Ventilation

### 结构特征

泵: 旋涡式清水泵

泵体: 铸铁/铸铁镶铜/铸铁镶不锈钢

叶轮: 铜

机械密封: 石墨+陶瓷+不锈钢+橡胶

前端盖: 铸铁/铸铁镶铜

电机: 单相大马力连续工作制

电机机座: 铝压铸

转轴: 45#碳钢/304不锈钢焊接轴/整轴420不锈钢

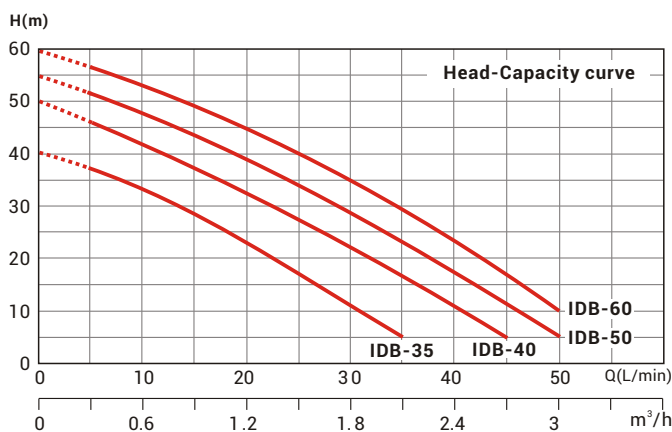
绝缘等级: B级/F级

防护等级: IP44/IP54

冷却方式: 风冷

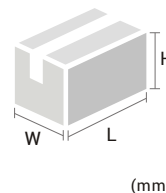


IDB-35



### 包装尺寸及毛重 PACKAGE DIMENSIONS & G.W.

型号 Model	长 L	宽 W	高 H	重量 KG	1X20"柜数量 1X20" FCL QTY (pcs)
IDB-35	285	150	185	5.4	3400
IDB-40	335	180	200	9.6	2200
IDB-50	335	180	200	10.2	2200
IDB-60	425	200	225	22	1100



安装尺寸图请查看55页

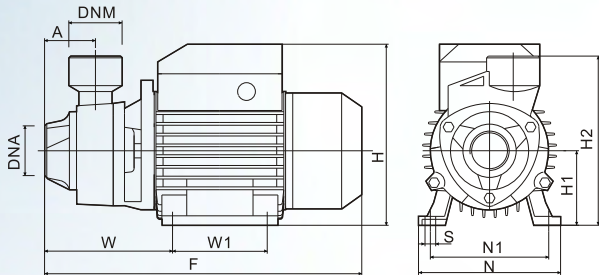
For installation dimensions, please reference to page 55.

### 技术参数 PERFORMANCE SPECIFICATIONS

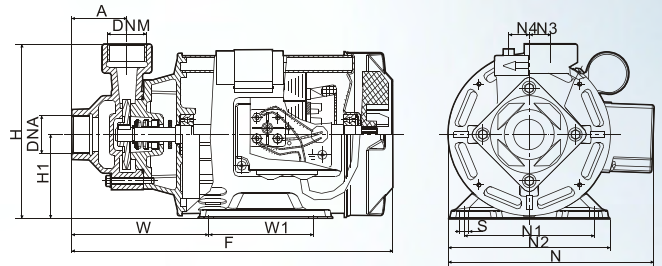
型号 Model	功率 Power		电流 Ampere (A)	最大吸程 Suct. max (m)	进出口管径 Inlet/Outlet DIA	流量 Q=capacity										
						扬程 H (m)										
						m³/h 0	0.3	0.6	0.9	1.2	1.5	1.8	2.1	2.4	2.7	3
IDB-35	HP	kW	220V/50Hz	9	1"x1"	0	5	10	15	20	25	30	35	40	45	50
IDB-40	0.5	0.37	2.5			40	36	31	28	24	19	10	5	-	-	-
IDB-50	0.75	0.55	3.8			50	46	41	36	30.5	25	20	15	9.8	5	-
IDB-60	1.0	0.75	5.2			55	52	48	43	39	33	28	22	17	11	5
IDB-60	1.5	1.1	7	60	1.5"x1.5"	60	56	51	47	43	39	35	29	23	18	10

+110V,110/220V60Hz etc. Models are available on request.

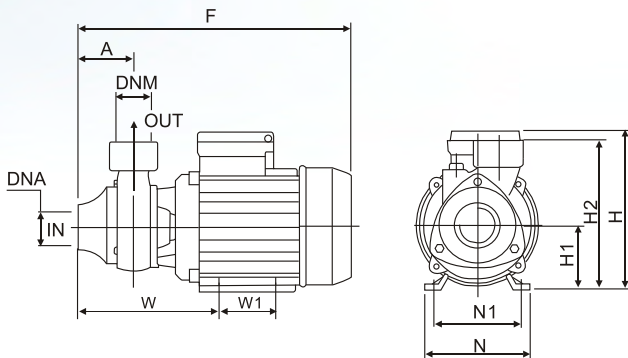
## 清水泵系列 CLEAN WATER PUMP SERIES



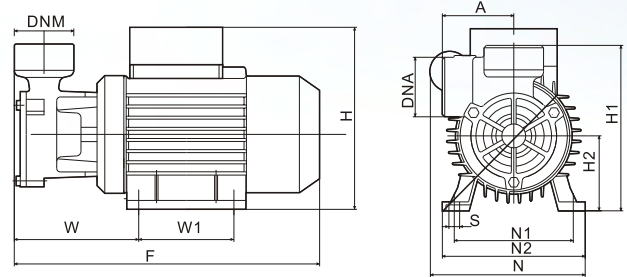
KP, IDB, KFP0, KRP, KP-60C Series



CP-130 Series



KPM Series



KDB, KFP1 Series

### 安装尺寸 INSTALLATION DIMENSIONS

型号 Model	尺寸 DIMENSIONS (mm)												
	A	F	H	H1	H2	N	N1	N2	N3	N4	W	W1	S
1KP-60	45	265	152	63	138	118	100	-	-	-	110	80	10
1KP-70	50	305	181	71	156	136	112	-	-	-	122	90	10
1KP-80	50	305	181	71	156	136	112	-	-	-	122	90	10
1.5KP-90	68	380	182	80	175	180	162	-	-	-	138	100	10
IDB-35	50	268	155	63	143	142	100	-	-	-	115	80	10
IDB-40	55	305	176	71	152	155	112	-	-	-	120	90	10
IDB-50	55	305	176	71	152	155	112	-	-	-	120	90	10
IDB-60	68	380	182	80	156	180	130	-	-	-	138	100	10
CP130(PM16)	47.5	277	150	72	-	178	112	139	20	18	118	90	8
KPM-45	50	265	155	63	143	120	97	-	-	-	67	80	10
KPM-60	50	290	172	71	156	135	112	-	-	-	71.5	90	10
KPM-80	50	290	172	71	156	135	112	-	-	-	71.5	90	10
KDB-125A	60	256	154	143	63	118	110	118	-	-	-	101	10
KDB-330A	60	256	154	143	63	118	110	118	-	-	-	101	10
KDB-550A	72	305	176	176	71	136	112	136	-	-	-	122	10
KDB-750A	72	305	176	176	71	136	112	136	-	-	-	122	10
KFP0	35	215	166	63	143	120	100	-	-	-	60	80	7
KFP1	23	225	166	109	143	120	100	-	-	-	68	80	7
KRP-16M	42	247	158	63	138	132	65	-	-	-	64	-	8
KP-60C	22.5	198	158	63	153	122	100	-	-	-	40.5	80	7